



**Assembly Election 2019**

# Sense Of Citizen's

MANIFESTO *for the*  
RESTORATION *of* WAGHOLI  
By WHSA


*"Necessity is blind until it becomes conscious.  
Freedom is the consciousness of necessity"*



**WHSA**

**Wagholi Housing Societies Association**

 [info@wagholihsa.org](mailto:info@wagholihsa.org)

 [fb.com/wagholihsa](https://fb.com/wagholihsa)

 [www.wagholihsa.org](http://www.wagholihsa.org)

 [twitter.com/wagholihsa](https://twitter.com/wagholihsa)

# Assembly Election 2019 Citizen's Manifesto



## WAGHOLI

### Summary of Issues, Submissions and Updates

Major Issues	Our submission(s)	Authority (-ies)	Whether any action was taken / Status	Our requests
Potable Water Supply	1. Quota of 1.5 TMC Water to be sanctioned for Wagholi	Irrigation Dept	Quota Sanctioned by irrigation department which limited for 4 months of monsoon	Water Quota Reservation throughout the Year
	2. Budgetary outlay by PMRDA to construct Waterline for supply of water from Wadhu KT to Wagholi	PMRDA	Tender Floated but work not Started. Inauguration of Work done by Hon'ble MLA on 06/09/2019	Immediate start of work order & commencement of Water Supply Scheme
	3. Provisioning Water through Water tanker suppliers	District Collector	No Action	Water Supply with fair rates in case of shortage of Potable water by civic body
	4. Illegal Water Tanker Prices Hike by Water tanker association	District Collector	No Action	Water Supply with fair rates in case of shortage of Potable water by civic body
	5. Redevelopment of Wagholi Old Lake which can be a source of Water	District Collector, MGP, PMRDA	Two lakes (Bhairavnath and Wagheshwar) refurbishment is in progress	Unused Quarries to be refurbished & connect to Lake for alternate source of Water Supply.
	6. Current state of water distribution is uneven. 3862 residential, 24 commercial and common 19 (Total – 3905) connections only whereas approximately 40,000 houses/flats in Wagholi.	Wagholi GP	No action Illegal connections continue to exist withdrawing heavy water	Even & metered distribution of water to all Wagholi residents.



## WWSA Wagholi Housing Societies Association

✉ info@wagholihsa.org

fb.com/wagholihsa

www.wagholihsa.org

twitter.com/wagholihsa

# Assembly Election 2019

## Citizen's Manifesto



### WAGHOLI

## Summary of Issues, Submissions and Updates

Incapability of Civic Body (Village Panchayat) in providing adequate civic amenities	Inclusion of Wagholi in PMC/PCMC or Constitution of New Civic Body Viz. Municipality.	Honorable Guardian Minister/Chief Minister/MP	No action. GR to be released for Inclusion.	Please intervene to expedite process of inclusion of Wagholi in Pune Municipal Corporation / PCMC OR to convert village Panchayat into Municipality
Garbage Dumping & burning in Residential Areas	No Garbage management in entire Wagholi area due to which dumping & burning everywhere in residential area and on roads.  <b>Continuous &amp; Rigorous follow up with Authorities but in vain compelling us to do a peaceful protest in the area</b>	MPCB, NGT, PMRDA, Gram Panchayat of Wagholi.	PMRDA has supplied Garbage collection dumpers with collection vehicles. Gram Panchayat has commissioned Garbage Processing Plants with the help of private vendors which are not operational. Hon'ble Collector Pune instructed to Present DPR in 2 months based on which land is sanctioned.	Immediate action required to stop dumping and burning of garbage and DPR for Waste Management considering future population.
Approach Roads	Good Quality approach roads – Survey to be done for Approach roads by these departments & Road work to be completed in time bound manner	Zilla Parishad, PWD, Wagholi GP, PMRDA	Gram Panchayat has released the tender for construction of Few approach roads but not all. E.g. A. Bakori road B. Som Terraces (Nagar road) C. Marvel Fria (Lohgaon road) D. Freesia (Awhalwadi road)	Construction of approach roads in internal area of Wagholi as per the sanctioned plan approved by PMRDA and Town Planning.  New Projects should not be sanctioned without proper approach roads  PMRDA should not force societies to open their internal roads in-lieu of their pending DP roads work.



## WWSA

### Wagholi Housing Societies Association

✉ info@wagholihsa.org

📘 fb.com/wagholihsa

🌐 www.wagholihsa.org

🐦 twitter.com/wagholihsa

# Assembly Election 2019 Citizen's Manifesto



## WAGHOLI

### Summary of Issues, Submissions and Updates

<b>Sewage and drainage System</b>	No drainage & sewage management system causing inconvenience and altercations amongst neighbors	PMRDA, Wagholi GP, MPCB	Drainage pipe line is in progress by Gram panchayat Wagholi	Completion of Drainage system on priority with CWTP-Common Waste water treatment Plant  Environment clearance should not be given without a proper drainage system.
<b>Law and Order/Traffic Management</b>	<ol style="list-style-type: none"> <li>1. Separate Police Station or inclusion of Wagholi in Pune City Police jurisdiction.</li> <li>2. Traffic signals present but never switched on.</li> <li>3. Traffic rules are not followed need serious action of offenders.</li> <li>4. Control extortion on the contracts by registering FIR and not NC.</li> </ol>	CP – Pune City  DGP - Maharashtra	As per CP – Pune City  Proposal already in process to join lonikand police station in Pune City Commissionerate for more staff and better response.	Proposal is still stuck for final approval and it needs to be expedited by our political leaders to get it approved.
<b>Power Supply</b>	Uninterrupted Power supply and Ease of MSEDCL Governance	MSEDCL	SDO Hadapsar has submitted the proposal to develop the infrastructure to supply electricity to >1 Lac consumers with enough staff, no action has been taken / Granted by CMD MSEDCL yet	1. Dedicated MSEB sub-station in Wagholi with Sufficient staff and infrastructure
<b>Voter Registration Drives</b>	WHSA has conducted 3 voter id drives till date in association & strict observation under Election officials resulted in approximately 5000 voters' enrollment. Suddenly the support for such camps is withdrawn depriving citizens of Wagholi from smooth voter's registration	District Election Officer and Deputy Collector Election branch	Request to Start Online voter id registration campaign	Necessary Directives to Pune DEO to smooth line the process of voter's registration without rejection

Wagholi Housing Societies Association



## WHSA Wagholi Housing Societies Association

[info@wagholihsa.org](mailto:info@wagholihsa.org)

[fb.com/wagholihsa](https://fb.com/wagholihsa)

[www.wagholihsa.org](http://www.wagholihsa.org)

[twitter.com/wagholihsa](https://twitter.com/wagholihsa)



# Assembly Election 2019 Citizen's Manifesto



## WAGHOLI

### Nagar Parishad or Mahanagar Palika or Inclusion in PMC or PCMC

The state government has issued merger notification of 34 villages into PMC in 2014, But Wagholi has not been included in PMC yet. The local governing body has failed to provide any kind of civic amenities to the newly urbanized residents of Wagholi, which can no more be called a village. Hence, it has become essential to merge Wagholi into PMC/PCMC or create a separate Nagar Parishad or Mahanagar Palika combining the nearby villages. The State government was supposed to merger the remaining villages in PMC in the coming three years which has not been done even after the deadline is passed.



## WWSA Wagholi Housing Societies Association

✉ info@wagholihsa.org

🌐 www.wagholihsa.org

📘 fb.com/wagholihsa

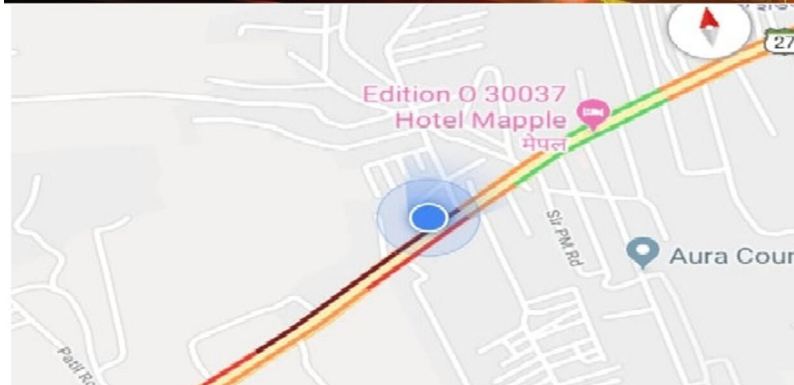
🐦 twitter.com/wagholihsa

# Assembly Election 2019 Citizen's Manifesto



## Pune-Nagar Highway - A Death Trap

The Pune-Ahmednagar road has been a congestion hot spot for years. Several stretches on highway are struggling to keep up with the rapid urbanization across Wagholi despite a road widening effort. One of the fastest-growing suburbs & Pune's main entry point from East. Substantial increase in residential and commercial projects has caused the area to witness massive traffic jams. Hence, it has become essential to build a flyover or widen the road enough to cater to population for next 20 years at least. Recently a 6 lane has been sanctioned from Wagholi to Shirur, but no work has been commenced.



**WWSA**  
**Wagholi Housing Societies Association**

info@wagholihsa.org

fb.com/wagholihsa

www.wagholihsa.org

twitter.com/wagholihsa

# Assembly Election 2019 Citizen's Manifesto



## Garbage Waste Management - Trash Smoke Chokes Wagholi

A Gram Sabha resolved to set up two garbage processing units at Wagholi, to process over 60 tonne garbage daily. Both the processing plants commissioned by GP took more than the stipulated time to be functional. Both the plants were declared a complete failure by the GP. Hence currently all the waste is being dumped on road sides and internal road. Swachh Bharat Abhiyan is a total failure in Wagholi.

Recently Pune Collector assured to provided barren land in Wagholi for the Waste processing plant on a condition that GP will present a sustainable model for the same, but till date GP has not taken it seriously and no plan has been presented to the Hon. Collector.

### THE SILVER LININGS

- ▶ The gram panchayat says the processing unit has started functioning
- ▶ The unit will be

commissioned in the next couple of weeks

- ▶ The gram panchayat has asked a private



agency to operate the processing unit

- ▶ The unit will process dry-mix garbage



### WAGHOLI SITUATION

- ▶ Residents have been complaining of garbage being set alight

- ▶ What was three years ago, a small dump, has now grown into a two storey-high toxic pile



**WWSA**  
**Wagholi Housing Societies Association**

✉ info@wagholihsa.org

fb.com/wagholihsa

www.wagholihsa.org

twitter.com/wagholihsa

# Assembly Election 2019 Citizen's Manifesto



## Water - Every Drop Counts

More than one lakh urban dwellers are facing the worst water crisis of the decade and there seems to be no solution. Water distribution has been neglected and not carried out professionally, which has compounded problems further. The rapid pace of urbanization, lack of relevant planning and population explosion has exposed the faulty method of building sanctions. It is shocking that civic authorities collect taxes from residents, but has no responsibility in providing them with even basic amenities which encourage citizens exploitation.

Hence, PMRDA developed and inaugurated Water Scheme on 06/09/2019. It should be commissioned on immediate basis and a water tanker policy must be made and water-related offences must be brought under the purview of the Indian Penal Code (IPC).

### Angry water tanker dealer threatens a Wagholi hsg society for dismissing him

Pune Mirror | Updated: Oct 8, 2018, 06:15 IST



By Supriya Dedgaonkar

Residents file a complaint with Lonikand cops after the contractor abused them for discontinuing with his services

Be it traffic snarls, garbage pile-ups or water shortage, problems do not seem to end for residents of Wagholi. This time, residents of Solacia Co-op Housing Society, Phase 2, are being threatened and abused by a water tanker dealer after

they discontinued his services for insufficient supply and pricing issues.

### HT investigation Part IV: Water tanker mafia in Wagholi holds housing societies to ransom

The indiscriminate construction allowed by PMC without creating the water supply infrastructure has led to this situation

PUNE Updated: May 22, 2018 15:22 IST

TEAM HT  
Hindustan Times, Pune



## WWSA Wagholi Housing Societies Association

info@wagholihsa.org

fb.com/wagholihsa

www.wagholihsa.org

twitter.com/wagholihsa



# Assembly Election 2019 Citizen's Manifesto



## Internal Roads - No Path to the Dream House

Gram Panchayat and PMRDA have collectively failed to build any of the internal roads, Most of the approach roads to the societies are labelled as illegal or "Private Roads". How can the development plan be sanctioned by PMRDA if the roads are illegal or Private. The problem causes grave inconvenience to thousands of citizens specially during monsoon season.

**Hence, all roads leading to societies that are already in public use, be built, illuminated & maintained by local administration without local interference.**

### Pathetic road condition : Bakori Road, Wagholi

Oct 28, 2017, 06:13 IST

✉️ 🖨️ A- A+



Its been more than 3 years since the development of Wagholi has taken place. But the condition of internal road near JSPM engineering college towards bakori has worsened day by day. It has literally become life threatening to the residents . Invisible potholes and slippery roads have made

### Condition of the internal road to SOM Terrace Society- on Fhulmala road, Wagholi



Som Terrace - Wagholi

### Wagholi residents fight PMRDA over their internal road

By Salonee Mistry, Pune Mirror | Updated: Jun 24, 2018, 01:07 IST

🖨️ A- A+



*Authorities ask to demolish illegally built structure at one end of road in society, citing it prevented its use by public.*

Suyog Nisarg Society at Wagholi has locked horns with Pune Metropolitan Region Development Authority (PMRDA) over a 12-metre access road. While the society has staked that it is an internal road, the civic body insists it is



## WWSA Wagholi Housing Societies Association

✉️ [info@wagholihsa.org](mailto:info@wagholihsa.org)

📘 [fb.com/wagholihsa](https://www.facebook.com/wagholihsa)

🌐 [www.wagholihsa.org](http://www.wagholihsa.org)

🐦 [twitter.com/wagholihsa](https://twitter.com/wagholihsa)



# Assembly Election 2019 Citizen's Manifesto



## Drainage Pipe line

Lack of proper drainage line connectivity and sewage system in Wagholi has raised serious concerns of drainage water clogging through out the village and Nagar road causing severe traffic jams. Many societies and public venues have faced large stinking water being clogged raising serious health hazards. Many small societies which do not have STP facility into their premises are completely dependent on sanity vans which is an additional expense.

Hence, a proper sewerage connectivity & sewage system to be completed in entire Wagholi area to permanently solve health and water clogging issues faced by masses specially during monsoon season.



TOI, Pune, 22-Jun-2018, Page 8,



**WAGHOLI**  
**DW CLAIMS:** The civic authorities have been claiming in the run-up to the rainy season that they are monsoon prepared. But heavy shower left the entire Bakori road inundated. It was a pain for the pedestrians and also the motorists to use the road year it's the same story. Why do the authorities make such claims? – Siraj Dokadia



## WWSA Wagholi Housing Societies Association

✉ info@wagholihsa.org

🌐 www.wagholihsa.org

📘 fb.com/wagholihsa

🐦 twitter.com/wagholihsa

# Assembly Election 2019

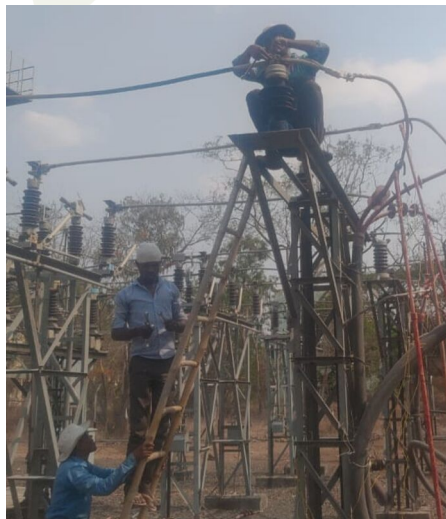
## Citizen's Manifesto



### Dedicated MSEB Sub Station

A dedicated MSEB Sub-Station is required for Wagholi area as the current Lonikand substation is far which causes frequent feeder interruptions as a long running electrical lines increasing problems in fault detection. The replacement of all the old and outdated parts in the distribution and supply infrastructure is a must which is causing frequent interruptions. The current MSEB office is small and faces water logging every year during monsoons hence shifting to the alternative bigger office will help the customers of prompt service and also better infrastructure management for the MSEB employees.

**Hence, a dedicated MSEB sub-Station and latest infrastructure is needed to curb the issues of frequent outages and uninterrupted distribution.**



**In Wagholi, this tiny MSEB office is caught in a limbo**  
It serves 55,000 consumers, but has a waiting area for just four people. A km away is a new building that's lying empty

**PHILMATA** road in Wagholi sits a tiny office of the Maharashtra State Electricity Board. It's built on a 200-ft. square, heavily forested site. A 100-ft. square office is an independent building with an overall built-up area of just about 90 sq ft. The four-room office, set up six years ago, caters to a population of 55,000 MSEB consumers. But it has no facilities. Almost every morning, there are at least 60 people queuing up to pay bills or register complaints. But a bench in the office's waiting area can barely accommodate three or four customers.

For staff, the office is just a resting place. "Residents often come to visit their children or elderly parents. We have one bench. Outside, there's no parking space either," said one staff member who didn't wish to be named.

Those who need to be visited, this office of the MSEB has stopped. It's moved to a new building on the nearby Bahadur Road, a structure that was built two years ago, with ample parking space and amenities. It's nearly 1 km from the existing office. But the MSEB has not been able to move the staff due to opposition from local residents. "What we have now is an old office building that's a maintenance of space and a new building that's a maintenance of staff. And we wonder why MSEB services are not to the point," said a resident, who lives nearby.

Overcoming the opposition, a committee of experts has set up a delegation that had the job of convincing the staff to move to the new building. But the staff collector had to move the staff to the new building. "We had to tell them that the new building is better than the old one," said one staff member. "We are not opposed to the new building. Instead, we requested the administration to keep a branch of the MSEB operational from the old office. The new building is



**BATTERIES NEAR THE DRINKING WATER**  
The MSEB office at Bahadur road in Wagholi, just a kilometre away is the new building (right), into which staff were supposed to move some two years ago. But locals opposed the shift.

The main approach road to the existing MSEB office here has become difficult for residents.

Direct current batteries in the office. These batteries should be kept away from people.

**WHAT HAPPENED**  
Local residents opposed MSEB plan to shift the office to the new building. They said the new office was across the highway that has no safe space for staff.

The MSEB official added that the power utility had plans of shifting staff branches, with the head branch at Bahadur road. "We wanted to keep this existing office, open another branch elsewhere and make the new office as the head office for the area. But this plan has been stuck since then."

**Many neighbourhoods spend sleepless night on Sunday due to power outages**

**Pune:** The respite the recent pre-monsoon showers brought to the residents was nullified by widespread and long power outages at various pockets in the city.

Several areas, especially the Salunke Vihar neighbourhood in Kondhwa, Wagholi and Bakori village experienced power cuts that left the residents fuming, sweating and questioning the city's preparedness for the monsoon. Though officials at the Maharashtra State Electricity Distribution Company Limited (MSEDCL) had earlier said that they were well-prepared for the monsoon and their transformers and underground cables were maintained and serviced regularly, the latest outage incidents raise questions. Many citizens also said the MSEDCL helpline —

**MSEDCL blames transformer snag**  
An MSEDCL spokesperson said a transformer supplying power to three societies in the Salunke Vihar area — Taha Housing Society, Rahul Residency and Mahesh Society — had developed a snag. Restoration work started at 11.30pm, however, during the same time the power became single phase. Our men continued the work, but the litter near the transformer caught fire and an underground cable was damaged. The power was restored at 11.30am. Time and again, we have appealed to people to not litter near the transformers," the spokesperson said.

1800-102-3435 and 1800-233-3435 were not reachable.

"These are only the first pre-monsoon showers," said Sheetal Jain, who lives in a Salunke Vihar housing society. "The power suddenly went off at midnight on Sunday. We decided to try and get some sleep at around 2.30am, but my children could not as they were very uneasy," Jain said.

Like the Jains, many others in the area had a sleepless Sunday night as the power supply was restored only in the morning hours.

Ravindra Apte, a resident of the same society, said he could hear people assembled in an open park near his house till 4am. "We don't keep inverters at home as Pune's weather is usually comfortable. However, this time, it was different. The power kept coming for a while and then going off for an hour or more," Apte said.

"I believe there was a fault and the MSEDCL people were notable to fix it. It was so humid and sleeping inside was a major problem. Until 3am, we were sitting in the balcony," a resident of Sai Dwarkamai society added.

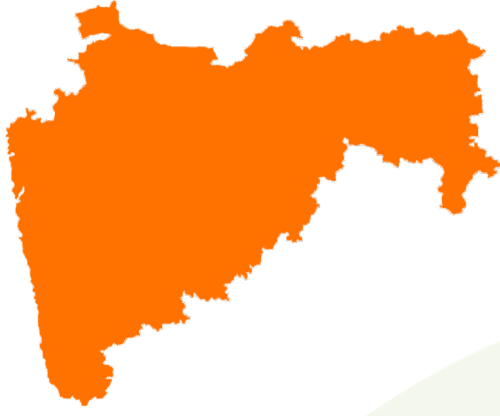
Wagholi had been struggling for even longer. "We have not had sustained electricity supply since the rains on Friday. Supply resumed around 3am on Saturday, but went off again around noon. On Sunday night, again, there was no power," said Srinil B, a resident.

In the nearby Bakori village, the situation was no better. Vikas Pathak, a resident, said, "Pristine Palm, Akansha and Pristine City housing societies have been having power problems since Friday. There were at least 48 hours of intermittent supply. At least 400 families have been affected," he said.



**WWSA**  
**Wagholi Housing Societies Association**

info@wagholihsa.org    www.wagholihsa.org  
fb.com/wagholihsa    twitter.com/wagholihsa



# Assembly Election 2019 Citizen's Manifesto



## Miscellaneous Demands



### Pune metro extention till Wagholi

**CP Pune City** @CPPuneCity  
 Jul 1  
 @DGPMaharashtra if you are there and exist, please approve to expand Lonikand police staff and infrastructure ...  
 Current 20-25 staff for 8-10 villages with one village Wagholi at a population burst (1.5 lacs+) ...  
 Such negligible ratio is dangerous for the people of this area.  
 1 26 18

Replied to **CP Pune City** and 6 others  
 Sir, proposal is already in process to join lonikand in PUNE city police commissionerate for more staff & better response.  
 You may like ur polical leadership to expedite.  
 6:32 PM - 1 Jul 2019  
 39 Retweets 46 Likes

**faceofwagholi** @faceofwagholi - Aug 24  
 @CPPuneCity Request if @WagholiHSA representatives can meet you to have more details around this to table it to all politicians as when @MiaPacharne was told in a meeting about this he was laughing as it was a big joke. Request an appointment.  
 CP Pune City @CPPuneCity  
 Replying to @nitinkjain @hb\_butalia and 6 others  
 Sir, proposal is already in process to join lonikand in PUNE city police commissionerate for more staff & better response.  
 You may like ur polical leadership to expedite.  
 11 93 35

Replied to **faceofwagholi** @WagholiHSA @MiaPacharne  
 1700 hrs today or tom as convenient to you  
 CP office  
 7:55 PM - 25 Aug 2019  
 21 Retweets 24 Likes

**Pune police let Wagholi-kars form night watch to tackle robberies**  
 With the help of the local police, the Gram Suraksha Dal, is an official group of residents from the area who patrol Wagholi according to a pre-determined time table worked out with the police.  
 Wagholi residents, not an area renowned for a quiet get-by attitude, have now begun a neighbourhood night watch.  
 With the help of the local police, the Gram Suraksha Dal, is an official group of residents from the area who patrol Wagholi according to a pre-determined time table worked out with the police.  
 Police inspector Suresh Kumar Raut, Lonikand police station, says, "This Gram Suraksha Dal with the residents of Wagholi, is because there was an increase in robberies in the area. The increase in population with many IT and other industrial employees shifting base to Wagholi, had led to an increase in robberies. Although the Gram Suraksha Dal, as a concept, is old, it is thanks to these young volunteers that we can work together to maintain peace in the area. They also help in regulating traffic in the area."

### Lonikand Police station merger to the city police commissionerate's jurisdiction



## WWSA Wagholi Housing Societies Association

info@wagholihsa.org

fb.com/wagholihsa

www.wagholihsa.org

twitter.com/wagholihsa



# Assembly Election 2019 Citizen's Manifesto



**Krida Sankul**




**Community Garden**



**WWSA**  
**Wagholi Housing Societies Association**

 [info@wagholihsa.org](mailto:info@wagholihsa.org)

 [fb.com/wagholihsa](https://fb.com/wagholihsa)

 [www.wagholihsa.org](http://www.wagholihsa.org)

 [twitter.com/wagholihsa](https://twitter.com/wagholihsa)

# Assembly Election 2019 Citizen's Manifesto




## Our OATH for Assembly Election 2019

*We, the citizens of India, having abiding faith in democracy, hereby pledge to uphold the democratic traditions of our country and the dignity of free, fair and peaceful elections and to vote in every election fearlessly and without being influenced by considerations of religion, race, caste, community, language or any inducement*



**WWSA**  
**Wagholi Housing Societies Association**

 [info@wagholihsa.org](mailto:info@wagholihsa.org)

 [fb.com/wagholihsa](https://www.facebook.com/wagholihsa)

 [www.wagholihsa.org](http://www.wagholihsa.org)

 [twitter.com/wagholihsa](https://twitter.com/wagholihsa)